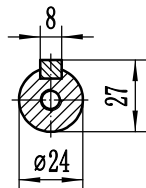
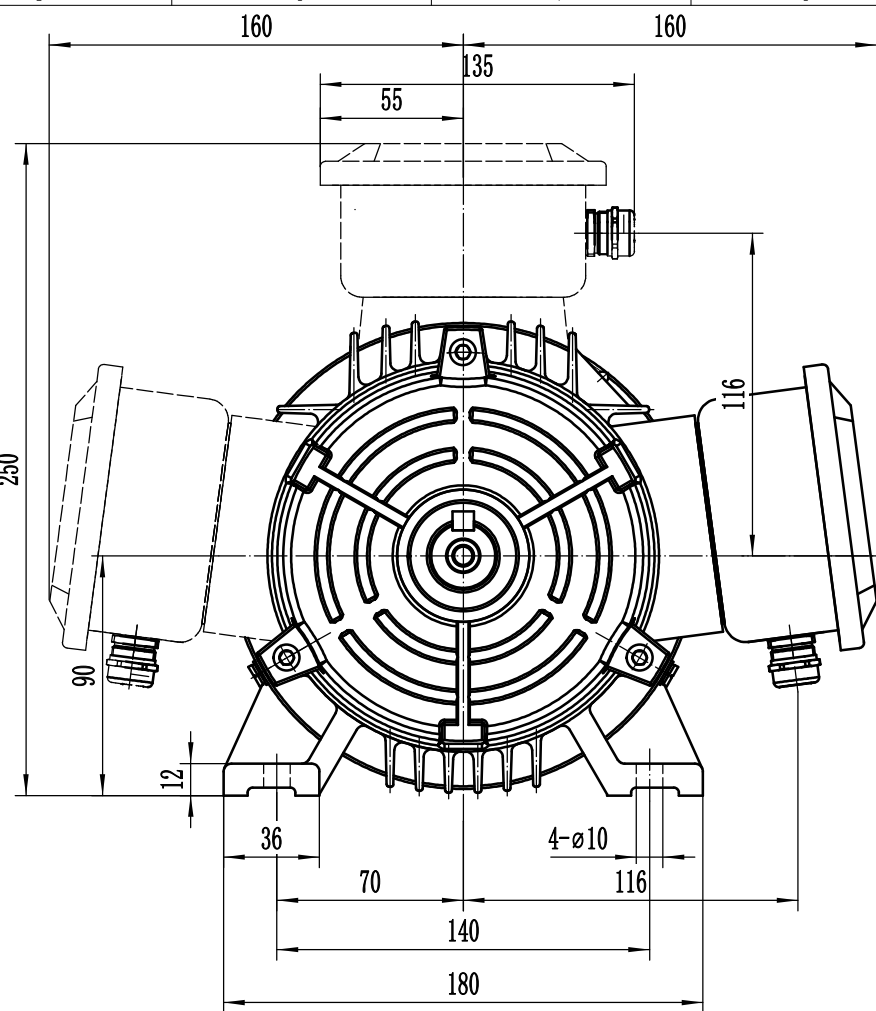
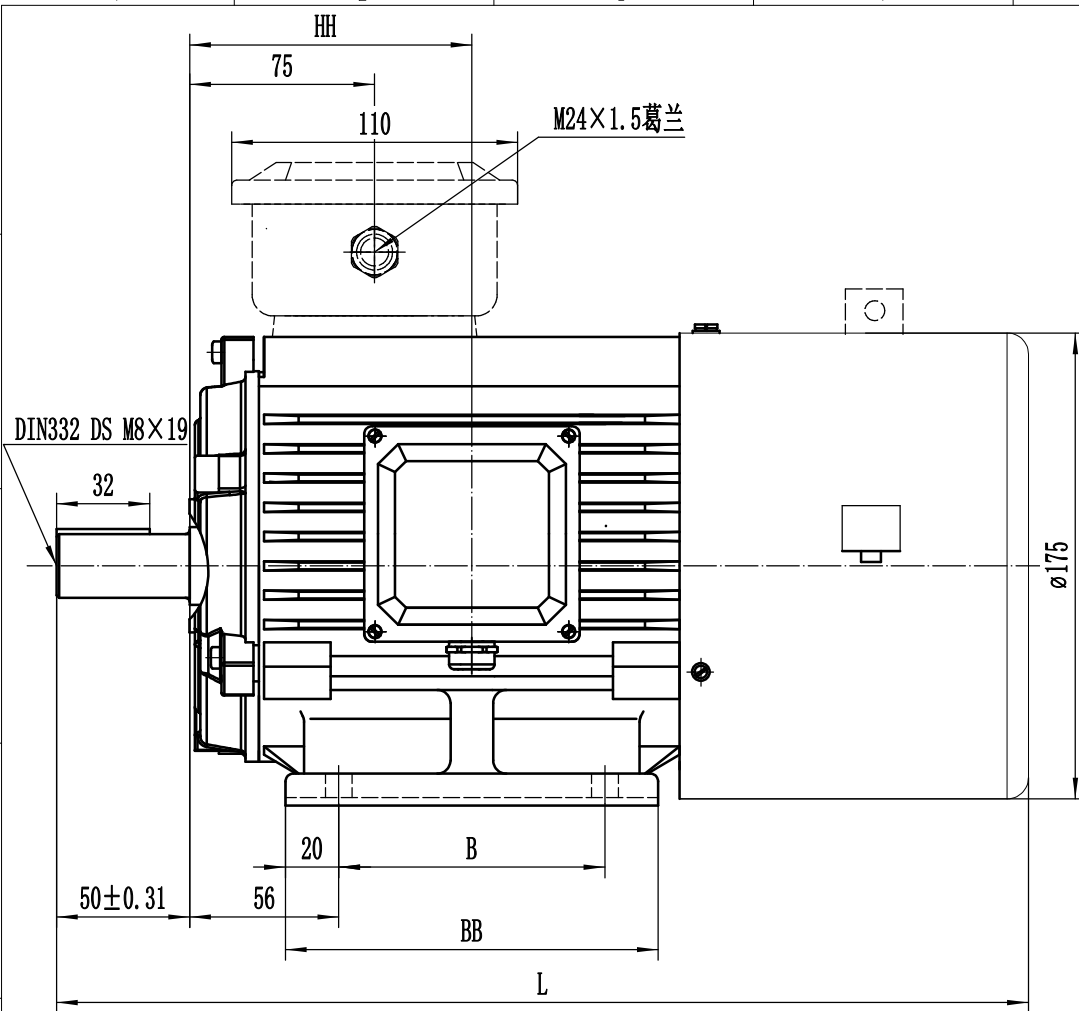
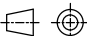


本图档为西门子公司所有，未经许可，不得复制或传播。本图档中的内容仅供参考，不作为任何产品的规格或性能的依据。本图档中的内容如有变更，恕不另行通知。

The reproduction, transmission or use of this document or its contents is not permitted without express written authority. All rights reserved. Copyright © 2006 Siemens AG. All rights reserved. All rights reserved.



| Type/型号    | B   | BB  | L   | HH    |
|------------|-----|-----|-----|-------|
| YVF2-90S-2 | 100 | 140 | 395 | 106   |
| YVF2-90S-4 |     |     |     |       |
| YVF2-90S-6 |     |     |     |       |
| YVF2-90L-2 | 125 | 165 | 420 | 118.5 |
| YVF2-90L-4 |     |     |     |       |
| YVF2-90L-6 |     |     |     |       |

|  |  |                                |  |   |                 |  |     |    |
|--|--|--------------------------------|--|---|-----------------|--|-----|----|
| general tolerances:<br>未注公差                                  |  | DIN EN50347                    |  | <br><br>CAXA | DIMENSION SHEET |  | 数量  |    |
| Revision / 版本号:  |  |                                |  |   | IMB3, FS90      |  | 单位  |    |
|  |  |                                |  |   | 外形图             |  | mm  |    |
|  |  |                                |  |   | IMB3, FS90      |  | 比例  |    |
| date:<br>日期  |  | name:<br>设计                    |  | checked / 审核:   | YVF2-90         |  | 1:2 |    |
| material/semi-finished part/name: item No.<br>材料/粗加工零部件号/模具号 |  | date: / 部门:<br>I DT LD SSML TD |  |   |                 |  | 图号  |    |
| replacement for:<br>替代版本                                     |  |                                |  | A5E53138679A  |                 |  |     | 图例 |