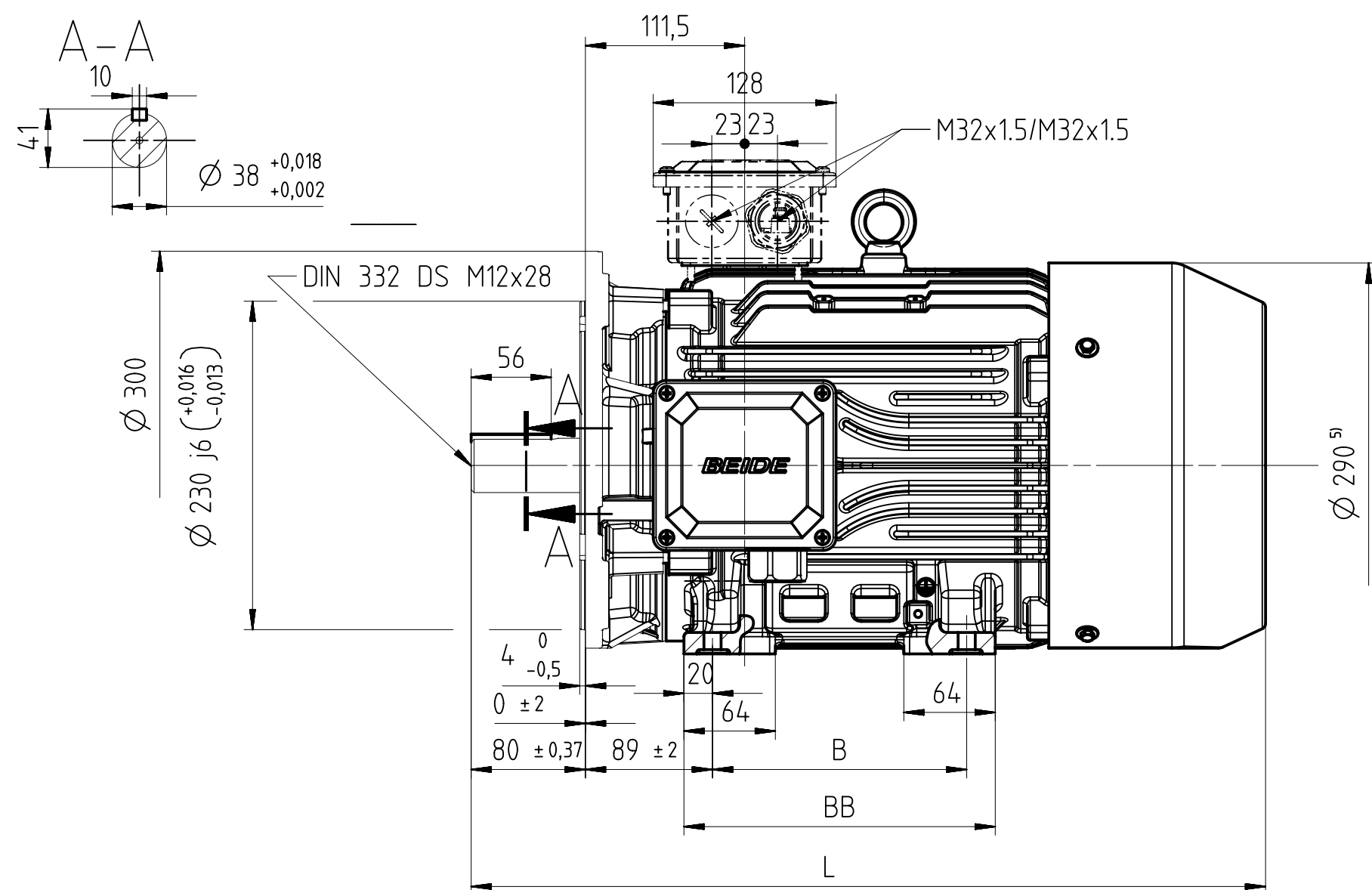
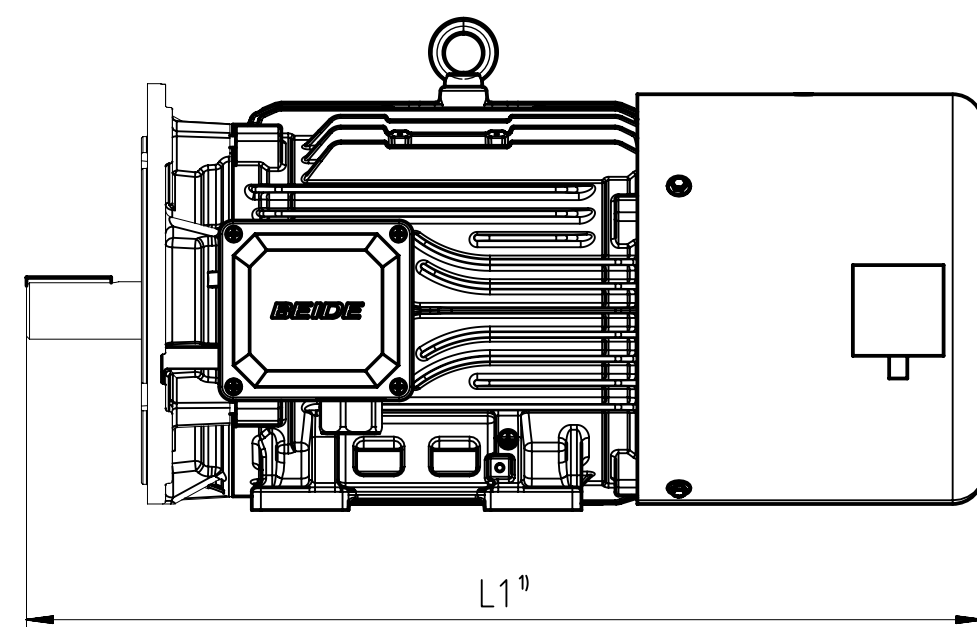


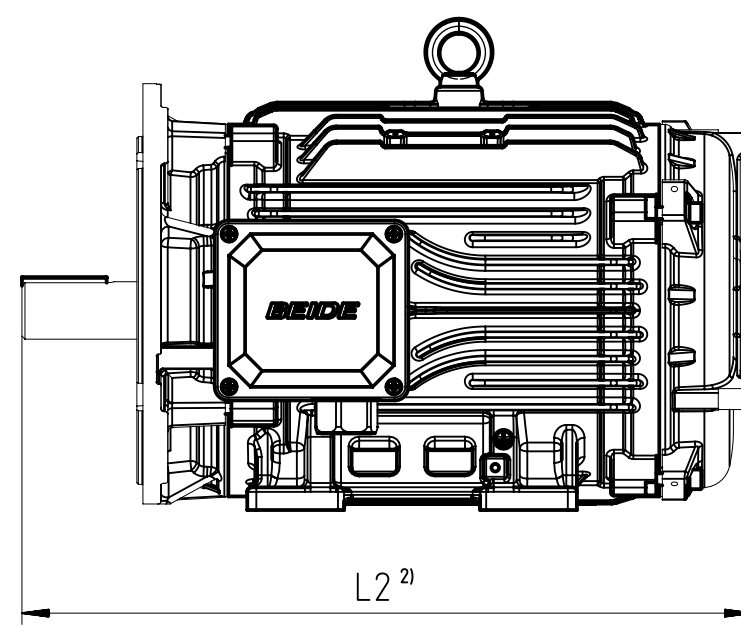
Confié à titre de secret d'entreprise. Tous droits réservés.  
Comunicado como secreto empresarial. Reservados todos os direitos.  
Доверенно в качестве производственного секрета.  
Все права сохраняются за нами.  
Confiado como secreto de empresa. Todos los derechos reservados.



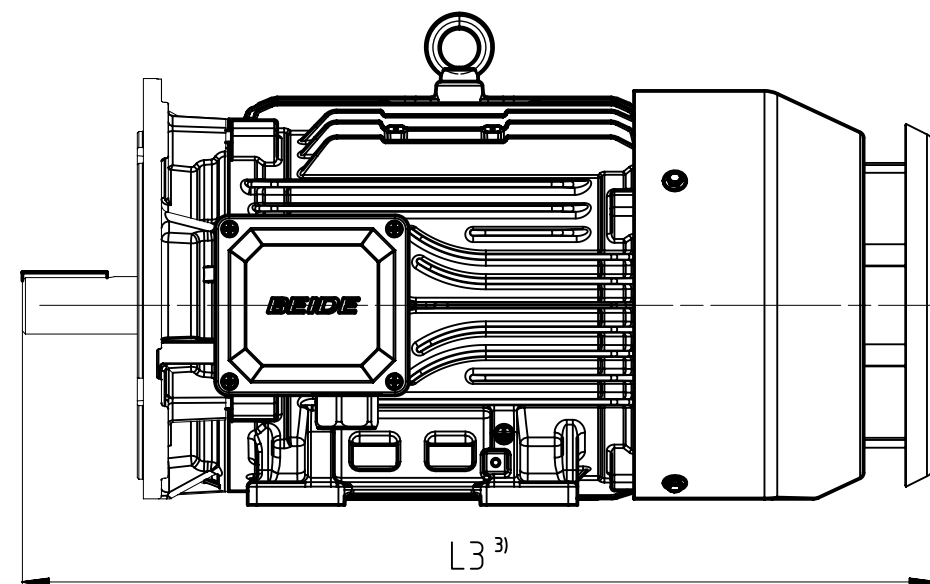
### F70选项电机



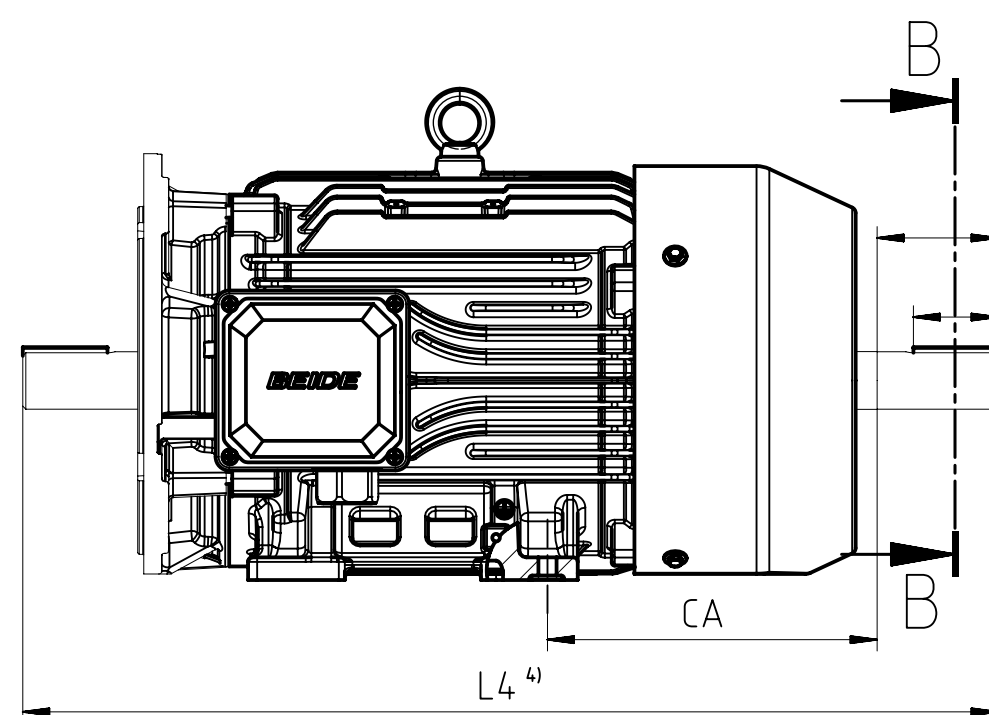
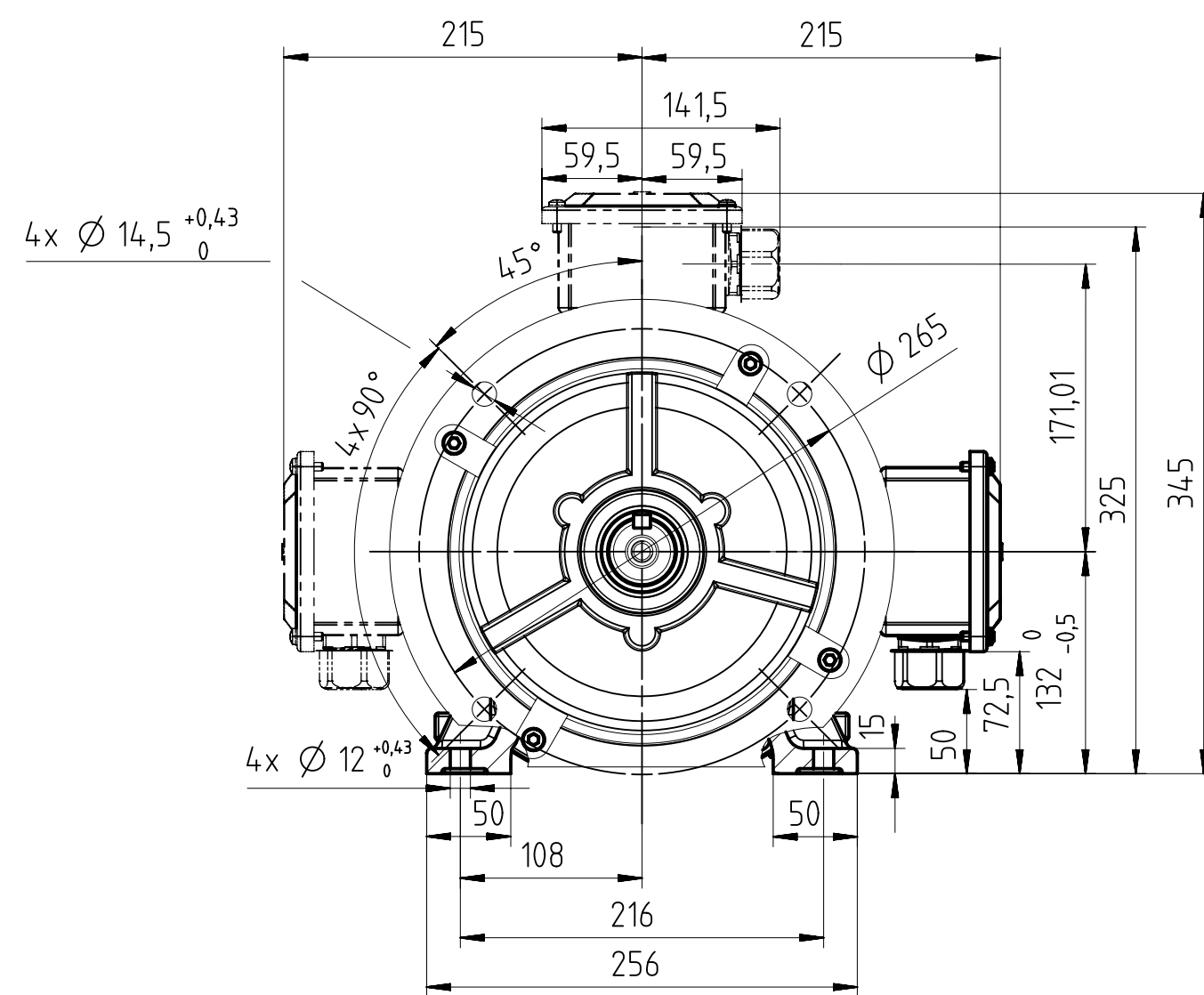
H00选项电机



### L72选项电机



L3<sup>3)</sup>


$$L_4^{(4)}$$


| Type/型号      | B   | BB  | CA  | L   | L1 <sup>1)</sup> | L2 <sup>2)</sup> | L3 <sup>3)</sup> | L4 <sup>4)</sup> |
|--------------|-----|-----|-----|-----|------------------|------------------|------------------|------------------|
| 1TL8004-1CA0 | 140 | 180 | 211 | 515 | 595              | 445              | 565              | 600              |
| 1TL8004-1CA1 | 140 | 180 | 211 | 515 | 595              | 445              | 565              | 600              |
| 1TL8004-1CB0 | 140 | 180 | 211 | 515 | 595              | 445              | 565              | 600              |
| 1TL8004-1CB2 | 178 | 218 | 218 | 560 | 640              | 490              | 610              | 645              |
| 1TL8004-1CC0 | 140 | 180 | 211 | 515 | 595              | 445              | 565              | 600              |
| 1TL8004-1CC2 | 178 | 218 | 218 | 560 | 640              | 490              | 610              | 645              |
| 1TL8004-1CC3 | 178 | 218 | 218 | 560 | 640              | 490              | 610              | 645              |
| 1TL8004-1CD0 | 140 | 180 | 211 | 515 | 595              | 445              | 565              | 600              |
| 1TL8004-1CD2 | 178 | 218 | 218 | 560 | 640              | 490              | 610              | 645              |

<sup>1)</sup>带独立驱动风扇长度（选件号F70）；

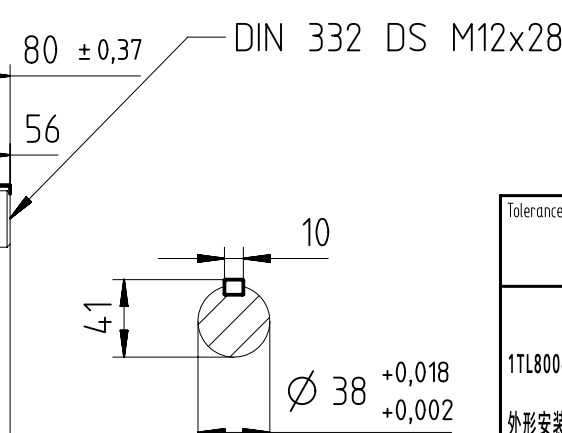
<sup>2)</sup>风机电机长度 (选件号F90) ;



<sup>3)</sup>带防护罩电机长度（选件号H00）；

4) 双出轴电机长度 (选件号 L72);

<sup>5)</sup> 风罩最大外圆，包含螺栓头尺寸。

B-B



|   |                                       |                                |                     |  |
|---|---------------------------------------|--------------------------------|---------------------|--|
| Tolerance   | Surface                               | Material                       | Weight<br>0         | Scale<br> |
| 1TL8004-1C<br><br>外形安装尺寸图 1TL8004-1C B35  | Author<br>Wang,Peng Chang             | DIMENSION SHEET 1TL8004-1C B35 |                     |  |
|   | Creator<br>2024-01-29 Wang,Peng Chang |                                |                     |  |
|   | Approval<br>2024-01-31 Zuo            |                                |                     |  |
|   | Department<br>PD LD P R&D 2 YIZ NP    |                                |                     |  |
|   | Change Order<br>P5A00464826           |                                |                     |  |
|   |                                       | Product MLFB(Product-ID)       | Doc Type TB / Z     |  |
|  | Doc State Released                    | Item No                        |                     | Paper Size A2  |
|   | Revision (Counter) 002                | Revision State AB              | Doc No A5E53330412A | 1st Language en<br>2nd Language de   |
| ©INNOMOTICS 2024  | Project No                            | Ref No                         | Sheet 1 of 8        |  |