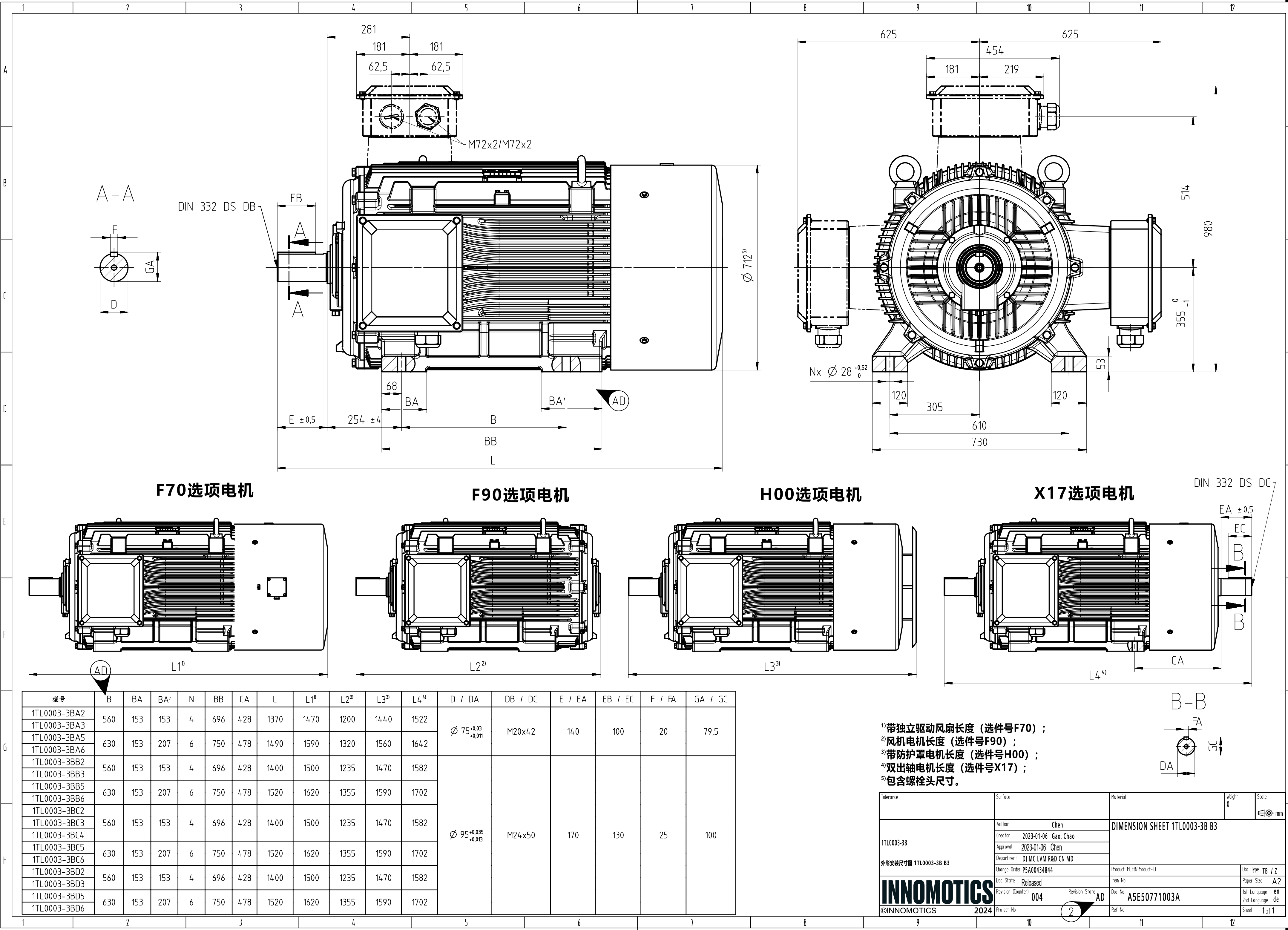


Transmittal, reproduction, dissemination and/or editing of this document as well as utilization of its contents and communication thereof to others, without the prior written consent of INNOMOTICS, is strictly prohibited. All rights created by patent grant or registration of a utility model or design patent are reserved.

Weitergabe sowie Vervielfältigung, Verbreitung und/oder Bearbeitung dieses Dokuments, Verwertung und Mitteilung seines Inhaltes sind verboten, soweit nicht INNOMOTICS schriftlich die Erlaubnis erteilt hat. Alle Rechte für den Fall der Patenterteilung, Gebrauchsmuster- oder Geschmacksmerkmalenurteilung vorbehalten.

Contitú a titre de secret d'entreprise. Tous droits réservés. Communiqué como secreto empresarial. Reservados todos os direitos. Comunicato come segreto d'impresa. Tutti i diritti sono riservati. Confidato como secreto de empresa. Nos reservamos todos los derechos.

Branding disclaimer applies

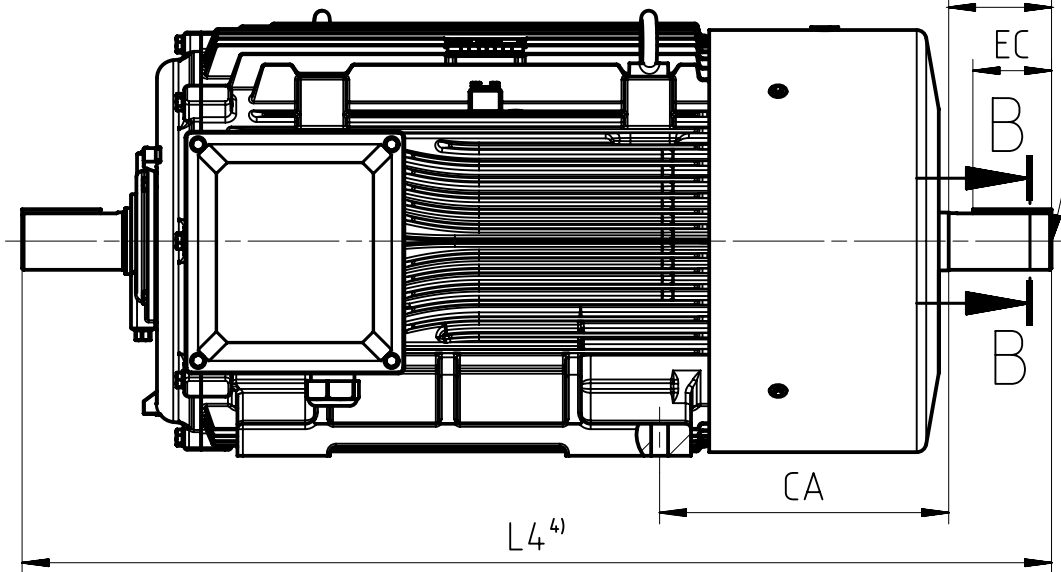
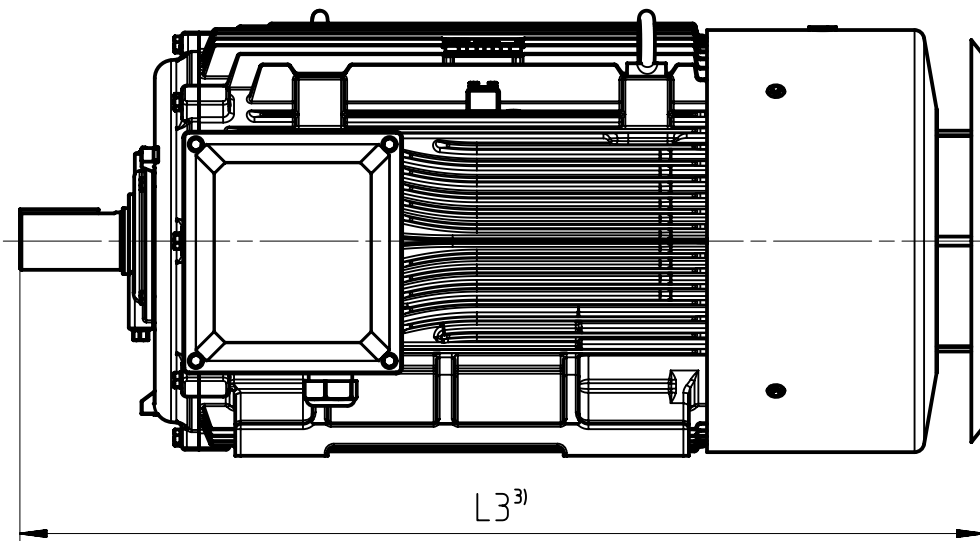
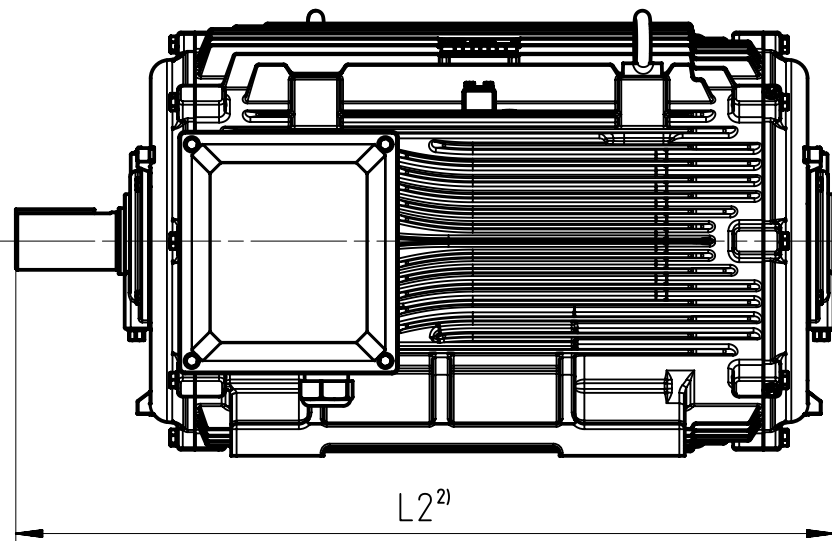
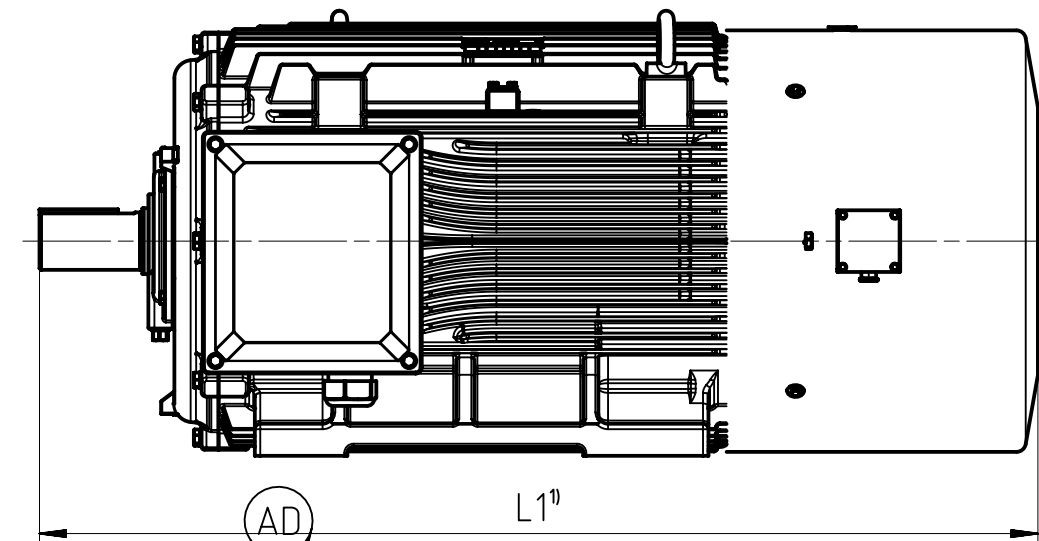


F70选项电机

F90选项电机

H00选项电机

X17选项电机



型号	B	BA	BA'	N	BB	CA	L	L1 ¹⁾	L2 ²⁾	L3 ³⁾	L4 ⁴⁾	D / DA	DB / DC	E / EA	EB / EC	F / FA	GA / GC
1TL0003-3BA2	560	153	153	4	696	428	1370	1470	1200	1440	1522	Ø 75 ^{+0.03} _{-0.011}	M20x42	140	100	20	79,5
1TL0003-3BA3	630	153	207	6	750	478	1490	1590	1320	1560	1642						
1TL0003-3BA5	560	153	153	4	696	428	1400	1500	1235	1470	1582						
1TL0003-3BA6	630	153	207	6	750	478	1520	1620	1355	1590	1702						
1TL0003-3BB2	560	153	153	4	696	428	1400	1500	1235	1470	1582	Ø 95 ^{+0.035} _{-0.013}	M24x50	170	130	25	100
1TL0003-3BB3	630	153	207	6	750	478	1520	1620	1355	1590	1702						
1TL0003-3BB5	560	153	153	4	696	428	1400	1500	1235	1470	1582						
1TL0003-3BB6	630	153	207	6	750	478	1520	1620	1355	1590	1702						
1TL0003-3BC2	560	153	153	4	696	428	1400	1500	1235	1470	1582	Ø 95 ^{+0.035} _{-0.013}	M24x50	170	130	25	100
1TL0003-3BC3	630	153	207	6	750	478	1520	1620	1355	1590	1702						
1TL0003-3BC4	560	153	153	4	696	428	1400	1500	1235	1470	1582						
1TL0003-3BC5	630	153	207	6	750	478	1520	1620	1355	1590	1702						
1TL0003-3BC6	560	153	153	4	696	428	1400	1500	1235	1470	1582	Ø 95 ^{+0.035} _{-0.013}	M24x50	170	130	25	100
1TL0003-3BD2	630	153	207	6	750	478	1520	1620	1355	1590	1702						
1TL0003-3BD3	560	153	153	4	696	428	1400	1500	1235	1470	1582						
1TL0003-3BD5	630	153	207	6	750	478	1520	1620	1355	1590	1702						
1TL0003-3BD6	560	153	153	4	696	428	1400	1500	1235	1470	1582						

- ¹⁾带独立驱动风扇长度 (选件号F70) ;
- ²⁾风机电机长度 (选件号F90) ;
- ³⁾带防护罩电机长度 (选件号H00) ;
- ⁴⁾双出轴电机长度 (选件号X17) ;
- ⁵⁾包含螺栓头尺寸。

Tolerance	Surface	Material	Weight 0	Scale mm
1TL0003-3B 外形安装尺寸图 1TL0003-3B B3	Author Chen	DIMENSION SHEET 1TL0003-3B B3		
	Creator 2023-01-06 Gao, Chao			
	Approval 2023-01-06 Chen			
	Department DI MC LVM R&D CN MD			
INNOMOTICS ©INNOMOTICS 2024	Change Order PSA00434844	Product MLFB/Product-ID	Doc Type TB / Z	
	Doc State Released	Item No	Paper Size A2	
	Revision (Counter) 004	Doc No ASE50771003A	1st Language en	
	Project No 2	Ref No	2nd Language de	