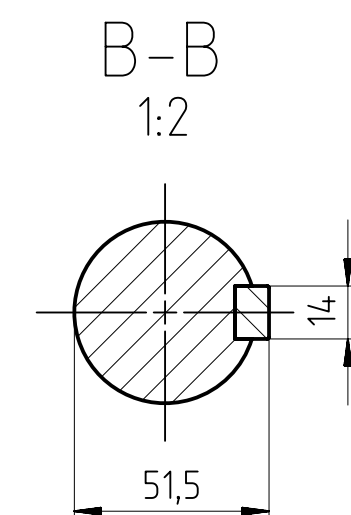




Type	Position of terminal box	BA	BB	BC
1TL0013-2A	TB-TS	80	369	32
	TB-RS			
	TB-LS	65	355	25



- 1) 带独立驱动风扇长度 (选件号F70) ;
- 2) 风机电机长度 (选件号F90) ;
- 3) 带防护罩电机长度 (选件号H00) ;
- 4) 双出轴电机长度 (选件号L05) ;
- 5) 包含螺栓头尺寸;
- 6) 左出线电机底部安装孔为腰型孔。

Tolerance	Surface	Material	Weight 0.99 kg	Scale  mm
1TL0013-2A 外形安装尺寸图 1TL0013-2A B35	Author Ye Wei	DIMENSION SHEET 1TL 0013-2A B35		
	Creator 2024-07-17 Huang Yan Jiang			
	Approval 2024-08-05 Li			
	Department IN LVM AA MF-YIZ R&D MD			
	Change Order P1A00013206			
	Doc State Released	Product MLFB(Product-ID)	Doc Type TB / Z	
	Revision (Counter) 003	Item No	Paper Size A2	
	Revision State AC	Doc No A5E53261899A	1st Language en	
			2nd Language de	
©Innototics 2024 - 2024	Project No	Ref No	Sheet 1 of 1	