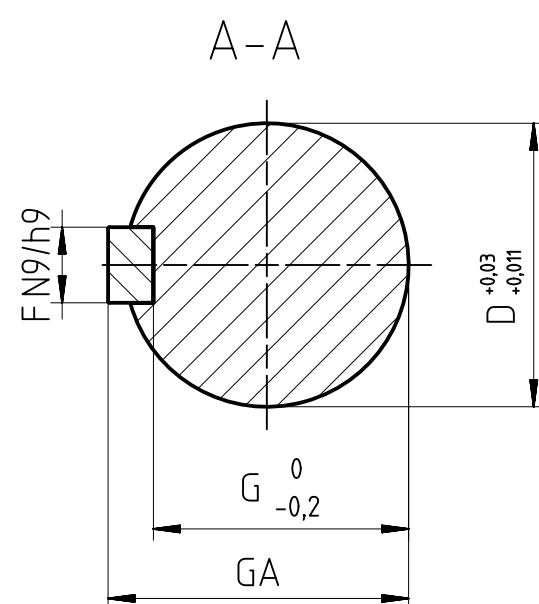
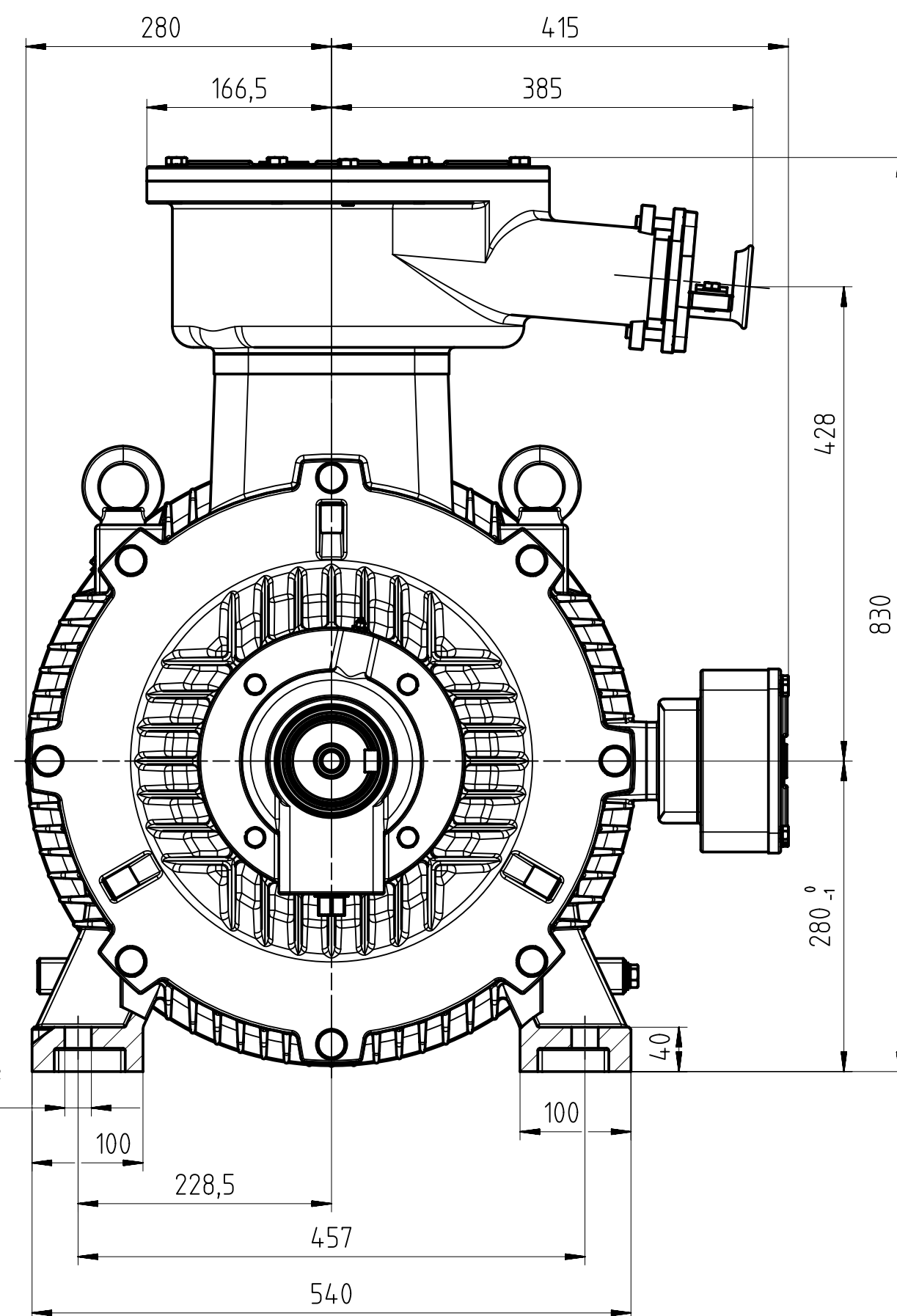
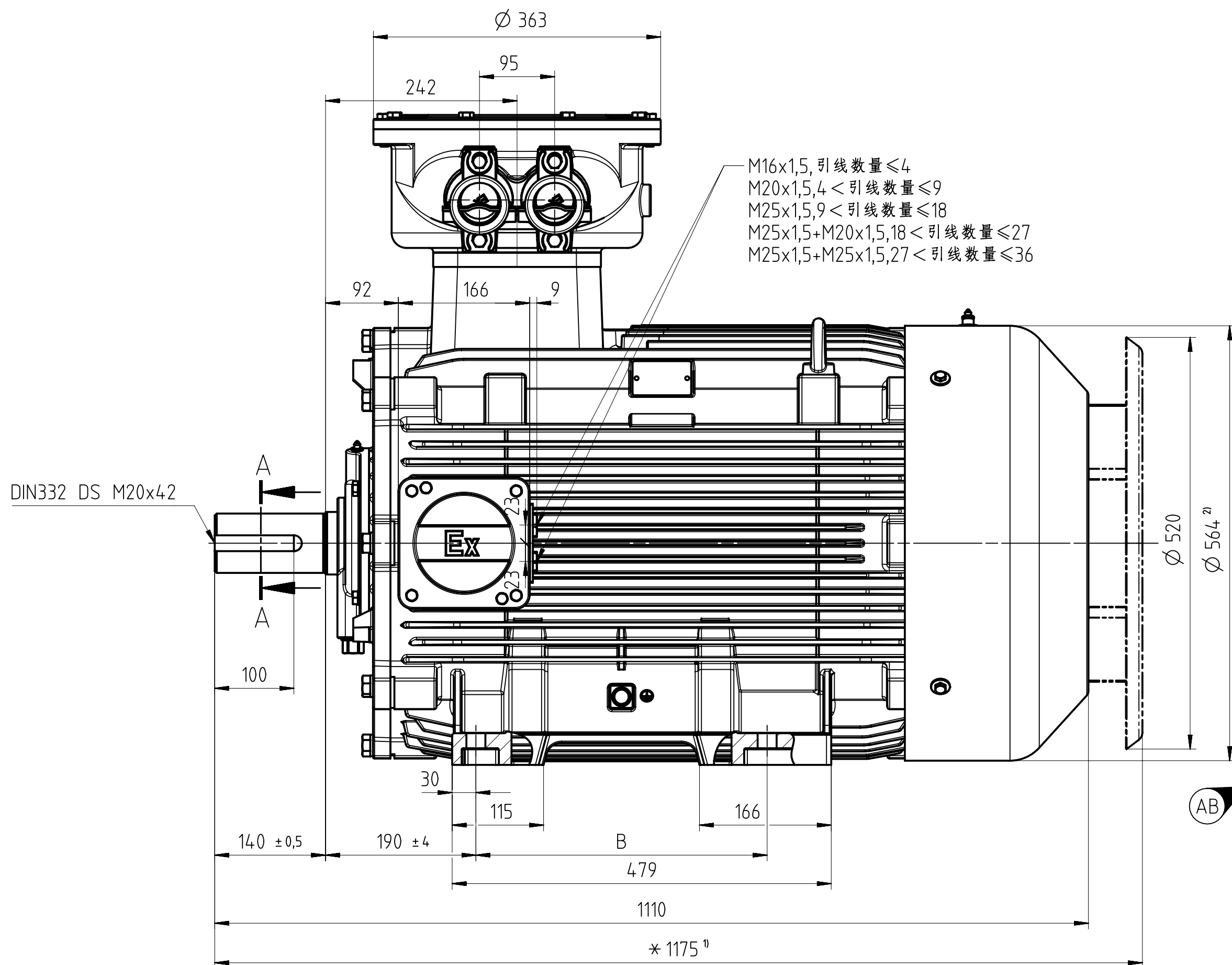
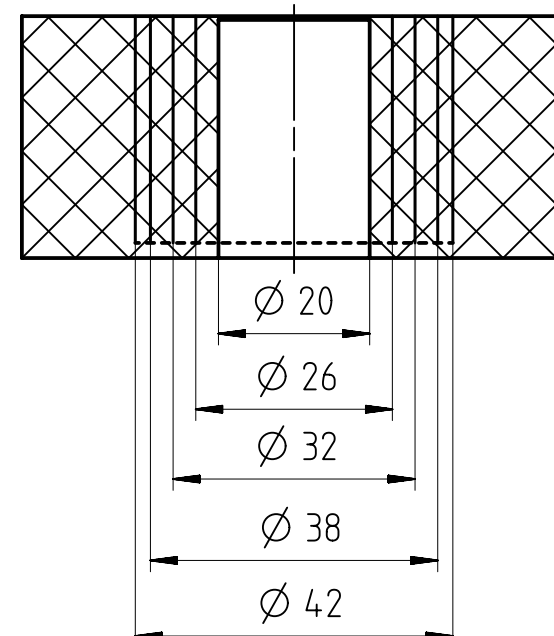


Type	B	D	F	G	GA
1MT8004-2DA0	368	Ø 65	18	58	69
1MT8004-2DA2	419				
1MT8004-2DB0	368	Ø 75	20	67,5	79,5
1MT8004-2DB2	419				
1MT8004-2DC0	368				
1MT8004-2DC2	419				
1MT8004-2DD0	368				
1MT8004-2DD2	419				



主出线口密封结构



孔 径	∅ 20	∅ 26	∅ 32	∅ 38	∅ 42
电缆外径	∅ 19	∅ 25	∅ 31	∅ 37	∅ 41

1)当选用驱动端向下的安装方式时,电机标配防雨罩。

If the motor is installed vertically with drive-end downward, fan cover will be equipped with protection cover as standard.

2) 包含螺栓头尺寸。

Includes bolt head dimensions.

Tolerance	Surface	Material	Weight 0.99 kg	Scale
1MT8004-2D	Author Zhu	DIMENSION SHEET R57 1MT8004-2D IM B3 Ex db IIB T4 Gb		
	Creator 2024-07-31 Zhu			
	Approval 2024-08-06 Ji			
	Department IN HVM PLM CN R&D			
外形安装尺寸图R57 1MT8004-2D IMB3 Ex db IIB T4 Gb	Change Order P1A00011128	Product MLFB/Product-ID	Doc Type TB / Z	
INNOMOTICS	Doc State Released	Item No	Paper Size A2	
	Revision (Counter) 002	Revision State AB	Doc No L1D30321493A	1st Language en
©Innomotics 2024	Project No 1	Ref No	Sheet 1 of 1	2nd Language de