

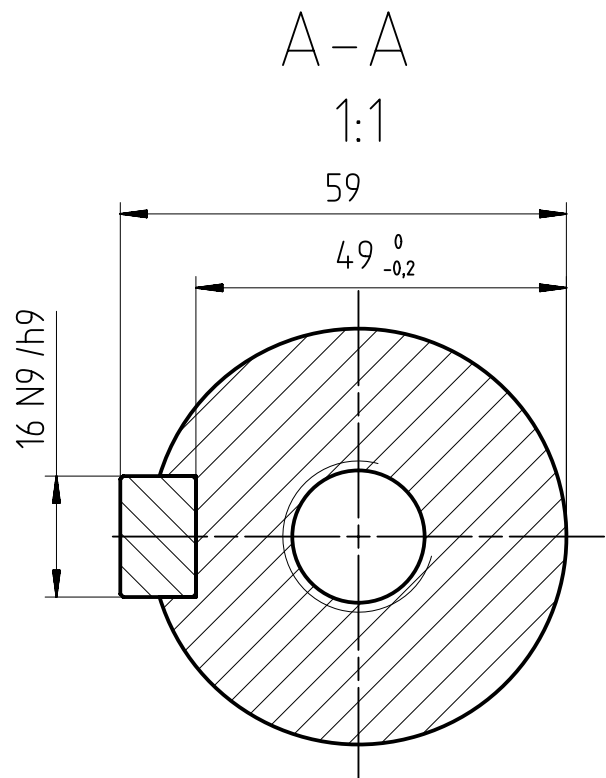
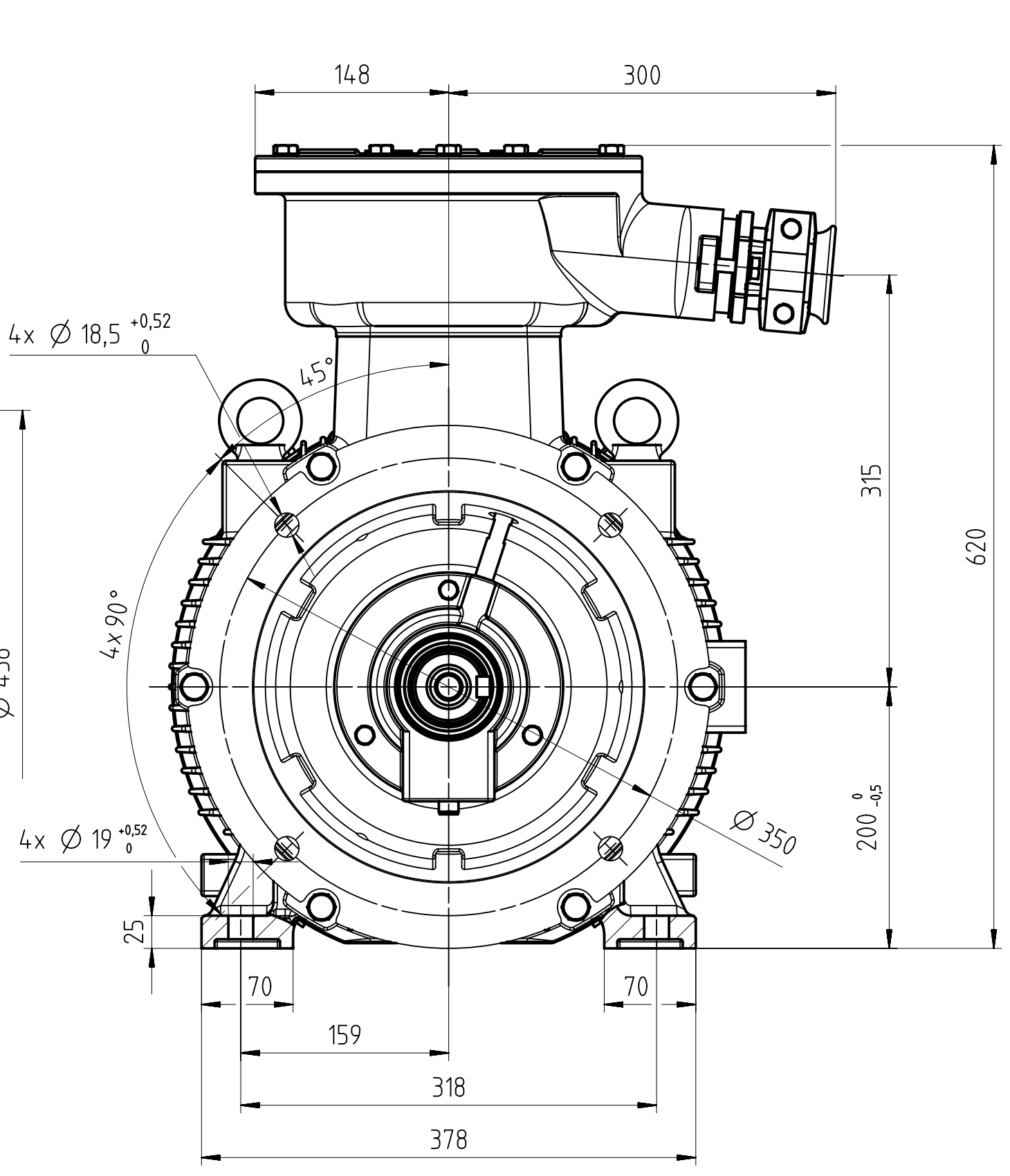
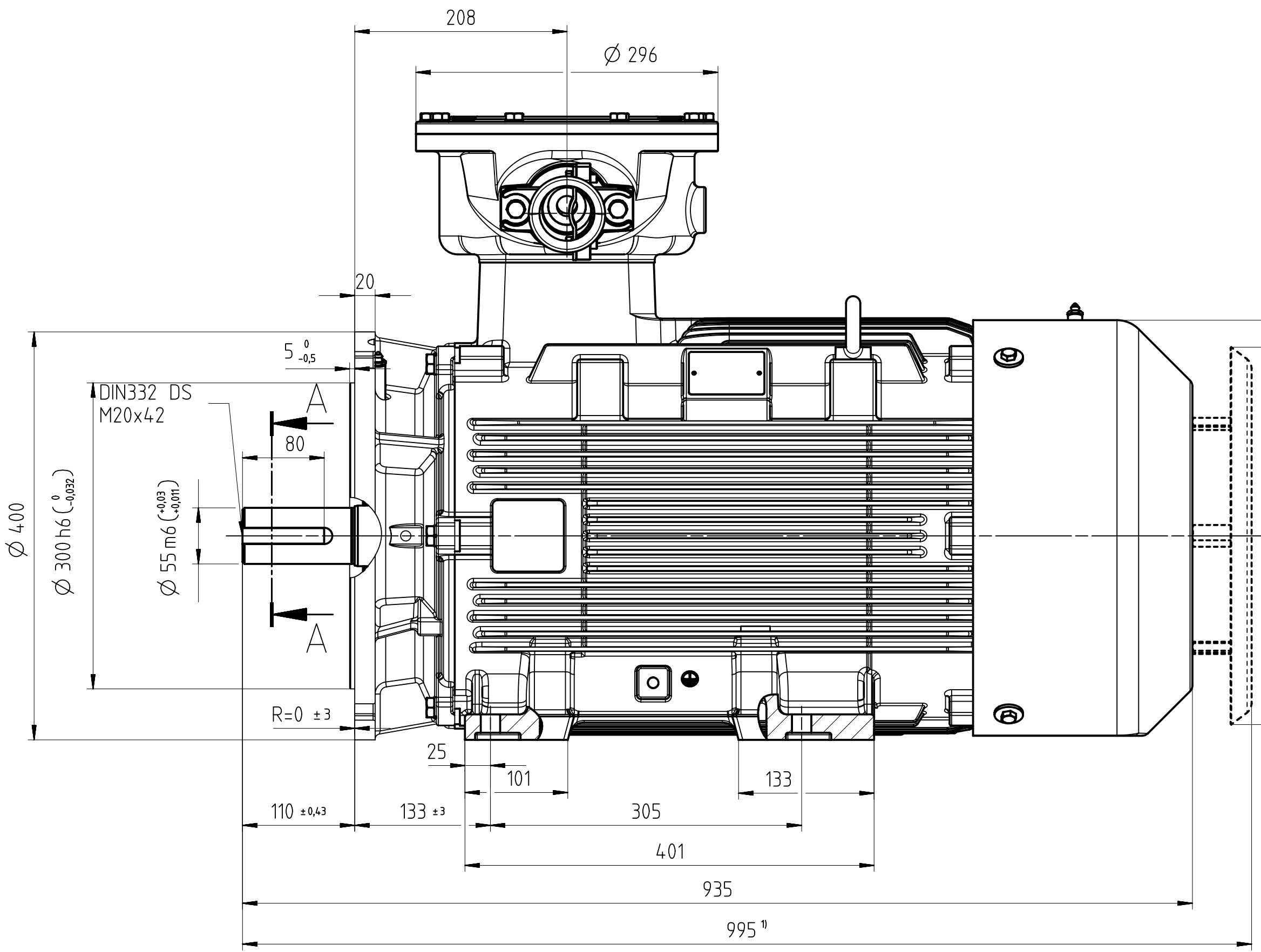
为保护  
贵司权益  
特此声明  
所有权利  
均归贵司  
所有

Transmittal, reproduction, dissemination and/or editing of this document as well as utilization of its contents and communication thereof to others, without the prior written consent of the copyright holder, is prohibited. All rights reserved. For payment of damages. All rights created by patent grant or registration of a utility model or design patent are reserved.

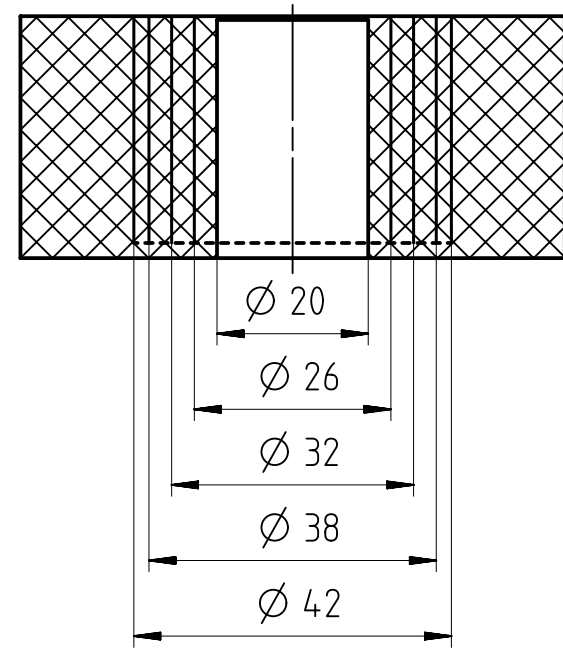
Weitergabe sowie Vervielfältigung, Verbreitung und/oder Bearbeitung dieses Dokumentes, Verwertung und Mitteilung seines Inhaltes sind verboten, soweit nicht schriftlich von der Urheberin genehmigt ist. Alle Rechte für den Fall der Patenterteilung, Gebrauchsmuster- oder Geschmacksmerkmalenurtragung vorbehalten.

Contingit a titre de secret d'entreprise. Tous droits réservés. Comunicado como secreto empresarial. Reservados todos los derechos. Apropriedade da empresa. Reservados todos os direitos. Confidant como secreto de empresa. Nos reservamos todos los derechos.

1



主出线口密封结构



<sup>1)</sup>当选用驱动端向下的安装方式时，电机标配防雨罩。  
If the motor is installed vertically with drive-end downward, fan cover will be equipped with protection cover as standard.  
<sup>2)</sup>包含螺栓头尺寸。  
Includes bolt head dimensions.

孔径	Ø 20	Ø 26	Ø 32	Ø 38	Ø 42
电缆外径	Ø 19	Ø 25	Ø 31	Ø 37	Ø 41

Tolerance	Surface	Material	Weight 0.99 kg	Scale 1:3 mm
1MT8004-2A	Author: Zhao, Nan Creator: 2024-08-23 Li, Yu Approval: 2024-08-30 Ji Department: IN LVM AA MF-YIZ R&D MD Change Order: P1A00014071	DIMENSION SHEET 1MT8004-2A IM B35 Ex db IIB T4 Gb		
外形安装尺寸图 1MT8004-2A IM B35 Ex db IIB T4 Gb	Doc State: Released Revision (Counter): 002 Revision State: AB	Product MLFB/Product-ID: L1D30263884A	Doc Type: TB / Z	Paper Size: A2
©Innomotics 2024	Project No:	Ref No:	1st Language: en 2nd Language: de	Sheet: 1 of 1