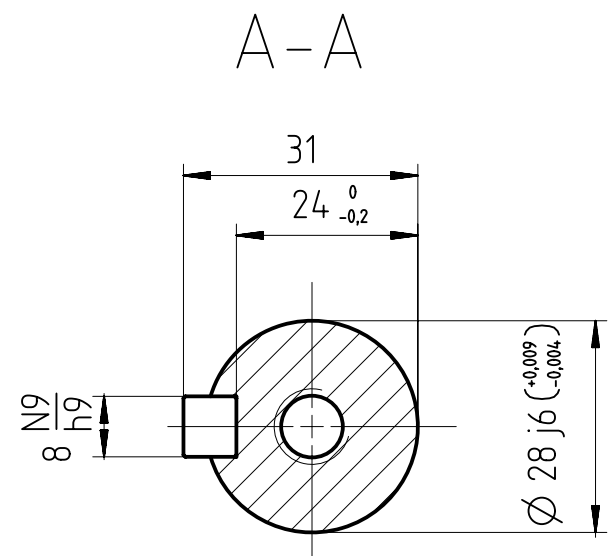
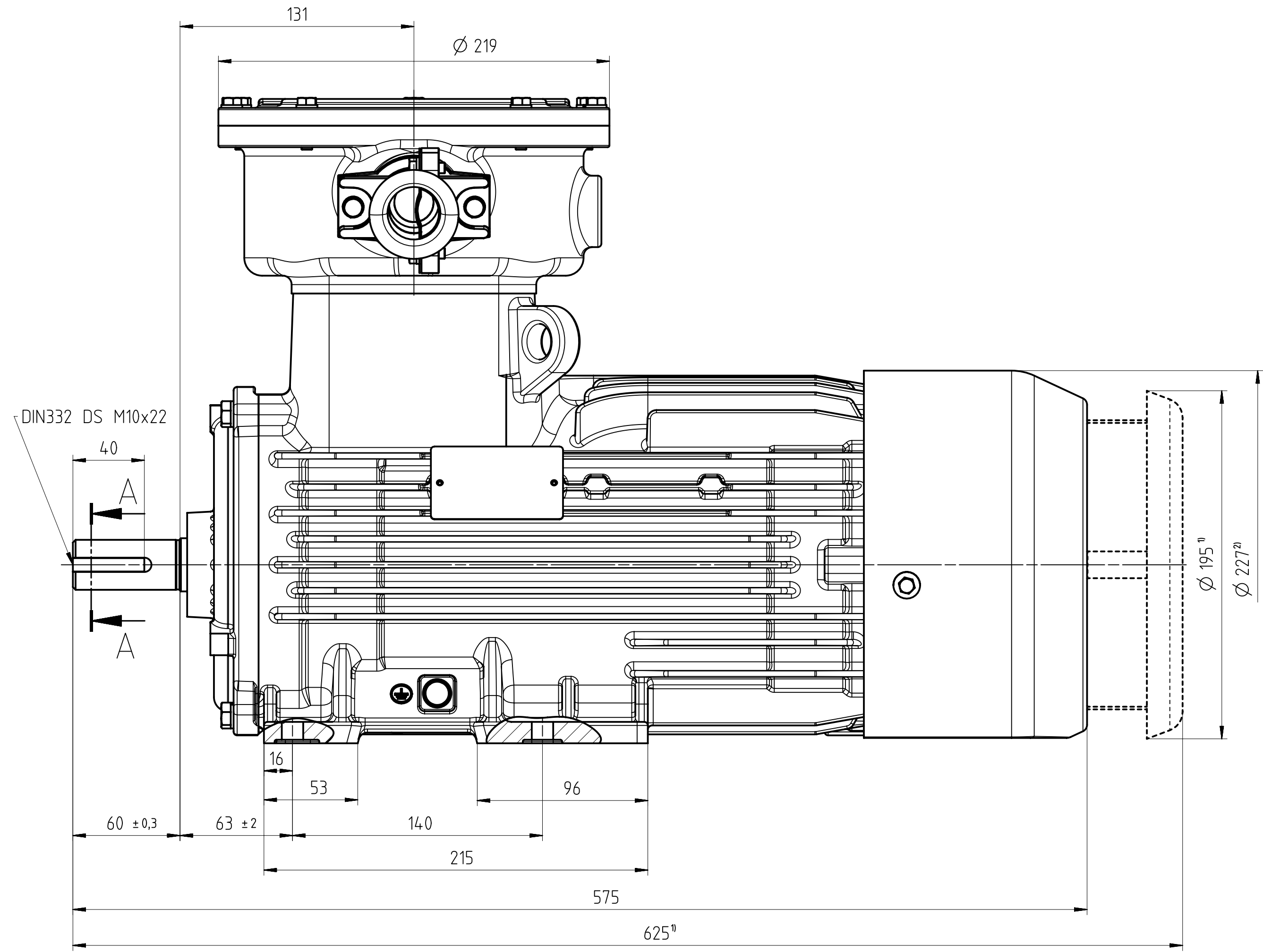


为保护
本公司
合法权益
特此声明
所有权利
均归本公司
所有

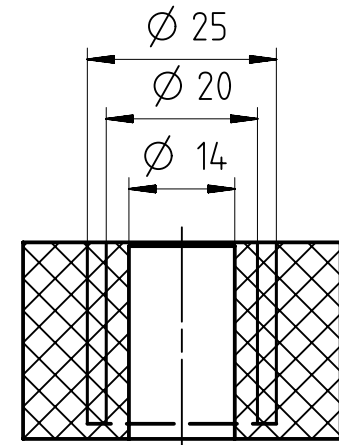
Transmittal, reproduction, dissemination and/or editing of this document as well as utilization of its contents and communication thereof to others, without the prior written consent of Innomotics, is strictly prohibited. All rights created by patent grant or registration of a utility model or design patent are reserved.

Weitergabe sowie Vervielfältigung, Verbreitung und/oder Bearbeitung dieses Dokumentes, Verwertung und Mitteilung seines Inhaltes sind verboten, soweit nicht ausdrücklich anders angegeben ist. Alle Rechte für den Fall der Patenterteilung, Gebrauchsmuster- oder Geschmacksmusterertragung vorbehalten.

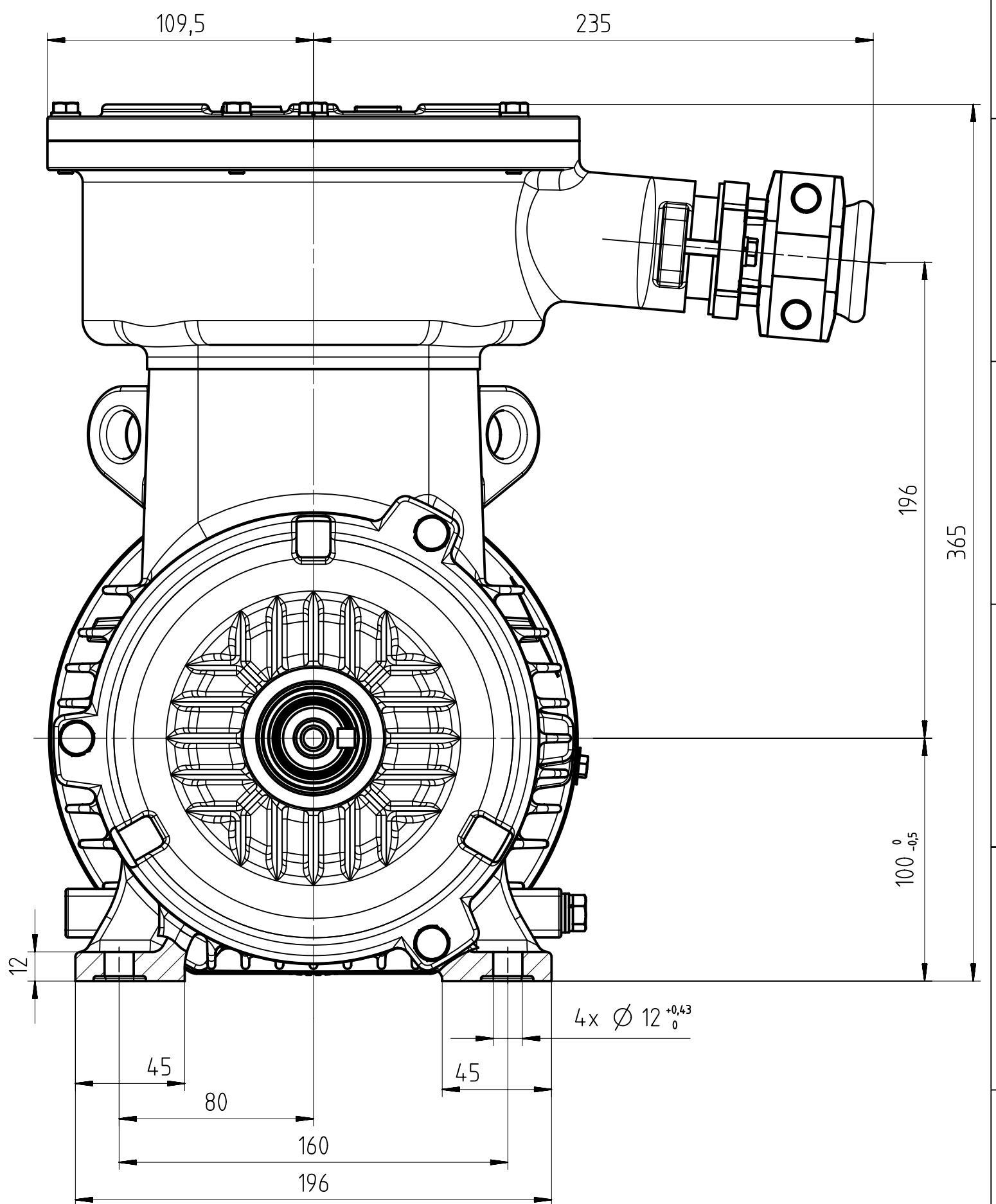
Contingit a titre de secret d'entreprise. Tous droits réservés. Comunicado como secreto empresarial. Reservados todos los derechos. Asegúrese de que esta información no sea divulgada. Confiado como secreto de empresa. Nos reservamos todos los derechos.



主出线口密封结构



孔径	Ø 14	Ø 20	Ø 25
电缆外径	Ø 13	Ø 19	Ø 24



- 1)当选用驱动端向下的安装方式时，电机标配防雨罩。
If the motor is installed vertically with drive-end downward, fan cover will be equipped with protection cover as standard.
- 2)包含螺栓头尺寸。
Includes bolt head dimensions.

Tolerance	Surface	Material	Weight 0.99 kg	Scale 1:2 mm
1MT8004-1A	Author Jiang	DIMENSION SHEET 1MT8004-1A IM B3		
外形安装尺寸图 1MT8004-1A IM B3 Ex db IIB T4 Gb	Creator 2024-05-13 Jiang	Ex db IIB T4 Gb		
	Approval 2024-09-24 Zhang			
	Department IN LVM AA MF-YIZ R&D MD			
	Change Order P1A00009923	Product MLFB/Product-ID	Doc Type TB / Z	
INNOTICS	Doc State Released	Item No	Paper Size A2	
	Revision (Counter) 001	Revision State AA	1st Language en	
			2nd Language de	
©Innomotics 2024	Project No	Ref No	Sheet 1 of 1	